

32-CH AI Network Video Recorder with HDMI

ANVR32-2S AI



32 Channels Input	H.265 H.264	HDMI VGA Dual Display	ONVIF compliant	1x USB3.0 2x USB2.0
4K HDMI Output	Audio IN/OUT	Smart Intrusion Prevention	Smart Detection	Smart Search

Overview

Professional SMB Surveillance Solution

Our Professional SMB Surveillance Solution offers cutting-edge technology tailored to small and medium-sized businesses. High-resolution cameras, seamless network integration, user-friendly software, and robust data security provide comprehensive surveillance with AI-powered Smart detection features. It ensures compliance, scalability, and peace of mind, making it the ideal choice for safeguarding your business assets and operations.

32 channel network video input with dual monitor support

Our 32-Channel Network Video Input with Dual Monitor Support empowers you with versatile surveillance capabilities. It accommodates thirtytwo camera inputs, delivering a comprehensive view of your premises. Dual monitor support enhances monitoring efficiency, allowing simultaneous viewing of multiple camera feeds. Gain better control and insights for enhanced security.

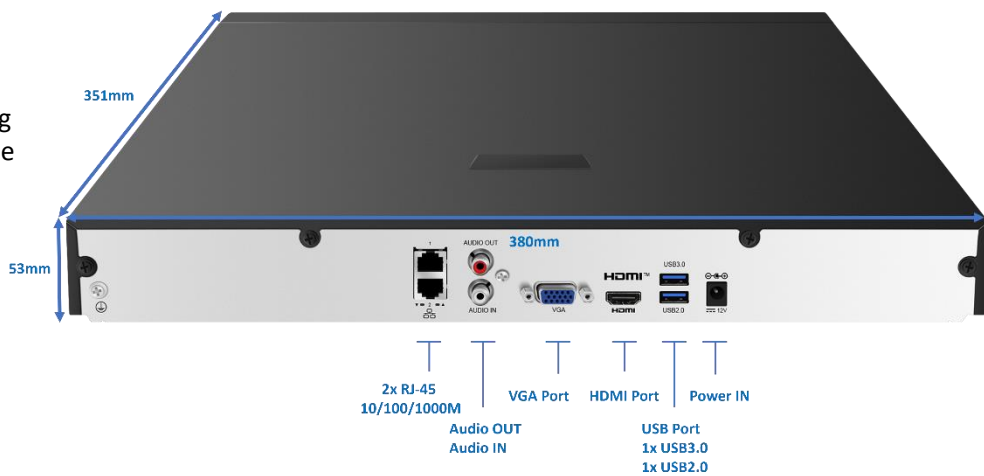
Use the ANVR32-2S AI as a standalone device and control it using a mouse connected to the ANVR, Or when the device is connected to the network you can also use the Webui of the ANVR32-2S AI to control and set it up.

Features

- 4K Recording and Playback, Live View.
- 32 Channel input.
- 2x RJ-45 10/100/1000Mbps.
- AI-powered Smart detection.
- High-resolution cameras for crystal-clear imagery.
- Android/IOS App Support.
- Robust network infrastructure for seamless streaming.
- User-friendly software with remote access.
- Supports 2x 3.5" SATA II x HDD.
- Compliance with privacy regulations.
- Support mainstream cameras of ONVIF conformance(Profile S, Profile G, Profile T) and RTSP protocols.
- Support 1-ch HDMI, 1-ch VGA, HDMI at up to 4K(3840x2160) resolution.
- HDMI and VGA simultaneous output.
- Tailored for small and medium-sized businesses, ensuring efficient surveillance and peace of mind.

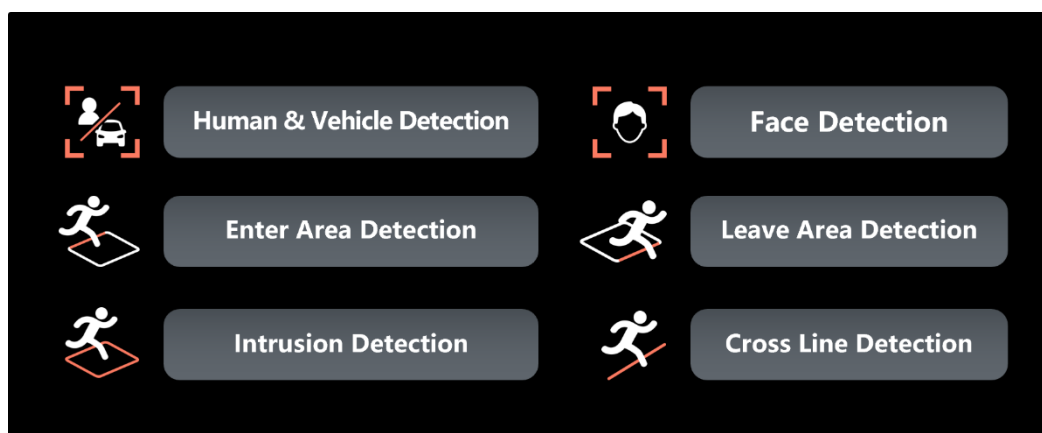
4K High Resolution NVR Dual Monitor Local HDMI/VGA Display

Our 4K High-Resolution NVR with Dual Monitor support elevates your surveillance experience. It delivers stunning clarity with 4K resolution, while the dual monitor setup allows simultaneous HDMI/VGA displays for comprehensive monitoring. Enhance your security system with crisp visuals and expanded viewing options for unparalleled situational awareness.



AI-Powered Smart Detection features.

The ANVR32-2S AI support additional Smart AI detection features in combination with the new AirLive AI Cameras. Giving you extra features in securing your property. Setup and AirLive camera with the AI features in combination with the ANVR32-2S AI and you can get recording of person leaving or entering a certain area. Face detection is also supported for an extra layer of security. High Quality, Reliable, High-Image, Fast Recording/playback, User-friendly, and AI-powered Smart detection features. For Resident and Business clients, no matter indoor or outdoor Security Surveillance Monitoring and management, the AirLive AirCAM AI family provides perfect solution.



Key aspects of VCA detection by IPCs:

Intrusion Detection: Detects when an object, like a person or vehicle, enters a defined area, triggering an alarm.

Line Crossing Detection: Identifies when an object crosses a virtual line, often used for perimeter security.

Other VCA Features: Includes features like Face detection, Human, Vehicle detection, Enter/Leave area, and people counting.

Configuration: VCA features can be configured through the camera's web interface or even through the connected Network Video Recorder (NVR).

Alarm Actions: When a VCA event is triggered, the camera can send alerts, activate alarms, trigger PTZ cameras to focus on the event, and send notifications (email with event pictures, etc.).

Human/Vehicle Detection: AirLive VCA systems can differentiate between humans and vehicles, allowing for more targeted event triggering.

Face Detection, Face Comparison: Face Detection will trigger an event when a face is detected. Face Comparison will compare a face which is detected with a previously uploaded image (Max 3000 faces) of the same face. When there is a message an event/alarm can be triggered.

Search Functionality: VCA data can be used to search through recorded video for specific events, such as finding all instances of a person crossing a line or entering a specific area.

AI-powered VCA: AirLive advanced VCA systems use artificial intelligence (AI) for more accurate and robust detection, such as facial Face detection or human/vehicle re-identification.

Example: A business owner might use VCA intrusion detection to protect their loading dock. They could define a virtual line across the dock entrance and set the VCA to trigger an alarm if someone crosses that line. If an employee or delivery driver enters the dock during off-hours, the system would trigger an alarm, alerting security personnel or the business owner.

*** Note that the AirLive ANVR supports many VCA functions but only those which are supported by the connected IP camera will be active for use.***

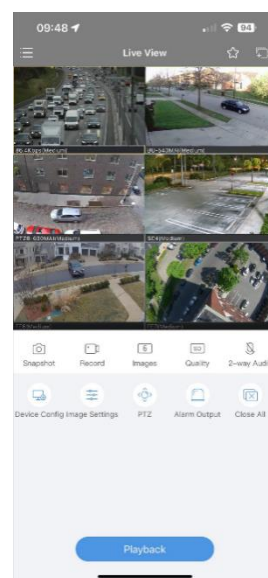
32-CH AI Network Video Recorder with HDMI

ANVR32-2S AI

airlive®

Android/iOS App Support

Our NVR offers seamless Android and iOS app support, ensuring you stay connected and in control. Live view your camera feeds remotely, configure camera settings on-the-go, and manage PTZ (Pan-Tilt-Zoom) functionality with ease. Empower yourself with the flexibility to monitor and adjust your surveillance system from anywhere.



NVR automatic intelligence Video Bandwidth Stream

Our NVR boasts automatic intelligent video bandwidth stream management. It dynamically optimizes video streams based on available bandwidth, ensuring seamless surveillance performance. This smart technology automatically adjusts video quality to maintain a stable connection, providing consistent, high-quality video feeds without manual intervention.

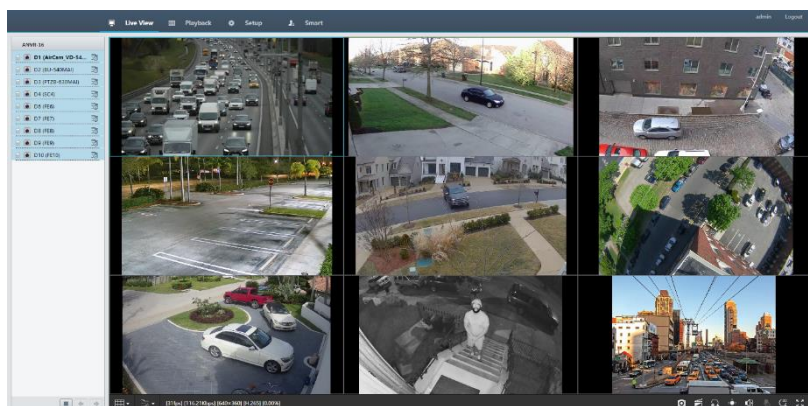
Enhanced Security and Efficiency: ANVR32-2S AI's Intelligent Event Management

The ANVR32-2S AI is armed with an intelligent alarm-triggering mechanism, bolstering security with support for diverse alerts and detection of abnormal events. In the realm of video surveillance systems, ensuring a rapid and responsive event management system is indispensable during critical situations. This sophisticated attribute substantially enhances the overall security and operational efficiency of AirLive NVR systems, ensuring that potential threats and events are promptly identified and addressed, ultimately fortifying the safety and effectiveness of the surveillance network.



32 Channels IP camera Performing Real-time Remote Monitoring

Our 32-Channel IP Camera system enables real-time remote monitoring. With multiple camera inputs, it offers comprehensive surveillance coverage. You can remotely view live feeds in real-time, ensuring you stay connected to your premises anytime, anywhere. Secure your property and assets with responsive, high-quality video monitoring.



Model	ANVR32-2S AI
Interface <ul style="list-style-type: none">• Network Interface: 2x RJ45 10M/100M/1000M self-adaptive Ethernet Interface• USB Interface: Rear panel: 1x USB3.0, 1x USB2.0 Front panel: 1x USB2.0• Hard Disk: 2x SATA interface Capacity up to 10TB• Standard: TCP/IP, P2P, NTP, DHCP, PPPoE, HTTP, HTTPS, DNS, DDNS, SNMP, SMTP, RTSP, IPv6, IPv4• Browser (Plugin): IE10, IE11, Chrome 45+, Edge 79+, Firefox 52+• Video Input: 32 Channels• Incoming Bandwidth: 160Mbps• Outgoing Bandwidth: 128Mbps• Remote Users: 128• HDMI/VGA Output• HDMI: 4K 3840x2160/30Hz, 1920x1080/60Hz, 1920x1080/50Hz, 1600x1200/60Hz, 1280x1024/60Hz, 1280x720/60Hz, 1024x768/60Hz• VGA: 1920x1080/60Hz, 1920x1080/50Hz, 1600x1200/60Hz, 1280x1024/60Hz, 1280x720/60Hz, 1024x768/60Hz• Recording Resolution: 12MP/8MP/6MP/5MP/4MP/3MP/1080p/960p/720p/D1/2CIF/CIF• Audio Output: 1-ch, RCA• Audio Compression: G.711A, G.711U• Two-way Audio: 1-ch, RCA (Using the audio input and output)• Synchronous Playback in Local: 16-ch• Live view display: 1/4/6/8/9/16/25/32• Corridor Mode Screen: 3/4/5/7/9/10/12/16/32• Support: Mainstream Cameras of ONVIF conformance (Profile S, Profile G, Profile T) and RTSP protocols• Snapshot: FTP/Schedule/Event: 4-ch snapshot (max. D1 (720 × 576) video resolution, with D1 snapshot resolution) Decoding <ul style="list-style-type: none">• Decoding format: H.265/H.264• Decoding Capability: Smart Off: 2 x 12MP@30FPS, 2 x 4K@30FPS, 4 x 4MP@30FPS, 10 x 1080P@30FPS, 20 x 720P@30FPS, 32 x D1 Smart On: 2 x 4K@30FPS, 4 x 4MP@30FPS, 8 x 1080P@30FPS, 16 x 720P@30FPS, 32 x D1• Decoding Capability Description: The resolution of each channel cannot exceed 8192 pixels in length and 4096 pixels in width	Smart <p>(IMPORTANT: Function depends if supported by connected Camera)</p> <ul style="list-style-type: none">• VCA Detection by IPC: Face Detection, Face Comparison (Max 3000 faces), Vehicle Detection, SIP (Intrusion Detection, Cross Line Detection, Enter Area, Leave Area), Ultra Motion Detection (UMD), People Counting (People Flow Counting, Crowd Density Monitoring), Traffic Monitoring• Smart by NVR: Face Detection, Face Comparison, Smart Intrusion Prevention (SIP), Ultra Motion Detection (UMD)• VCA Search: Face Snapshot Search, Face Comparison Search, Motor Vehicle Search, Non-Motor Vehicle Search, Human Body Search, General Search, People Counting Report, Heat Map, AcuSearch• Smart by IPC: All channels (up to 8 images/s in total) Face Detection, Face Comparison, Vehicle Detection, SIP, UMD, Traffic Monitoring• Vehicle Picture Library: Up to 5 vehicle picture libraries, with up to 25,000 vehicle pictures in total (Need LPR Camera for this function)• SIP by NVR: 2-ch• UMD by NVR: 4-ch General Alarm <ul style="list-style-type: none">• General Alarm: Defocus Detection, Scene Change Detection, Object Left Behind, Object Removed, Auto Tracking, Motion Detection, Tampering, Human Body Detection, Video Loss, Alarm Input, Audio Detection• Alert Alarm: IP Conflict, Network Disconnected, Disk Offline, Disk Abnormal, Illegal Access, Hard Disk Space Low, Hard Disk Full, Recording/Snapshot Abnormal

* Specification will be changed without prior notice

* All trademarks, logos and brand names are the property of their respective owners.



Model	ANVR32-2S AI
<div>Multiple Language<ul style="list-style-type: none">38 languages: Simplified/Traditional Chinese, English, Vietnamese, Thai, Turkish, Spanish (Latin America), Portuguese (Brazil), Spanish, Portuguese, French, German, Italian, Dutch, Polish, Czech, Hungarian, Slovak, Russian, Hebrew, Arabic, Ukrainian, Estonian, Bulgarian, Greek, Romanian, Danish, Swedish, Norwegian, Finnish, Croatian, Slovenia, Serbia, Korean, Japanese, Latvian, Lithuanian, Persian</div> <div>APP and Software Control<ul style="list-style-type: none">Windows: Web browserAPP iOS/Android: Download "Guard Viewer" App from APP/Play Store</div> <div>Power Input<ul style="list-style-type: none">Power Supply: 12V/3A DCPower Consumption: ≤12 W (without HDD)</div> <div>Environment<ul style="list-style-type: none">Operating temperature: -10°C ~ +55°COperating Humidity: ≤ 90% RH (non-condensing)</div> <div>Standard package of NVR<ul style="list-style-type: none">Product size: 38.0 x 31.5 x 5.3cm (L*W*H)Package size: 52.0 x 10.5 x 39.5cm(L*W*H)Package Weight: Weight (without HDD): ≤2kg (4.4lb) (G.W)Package content: 1x ANVR32-2S AI, Power Adapter, Mouse, QIG</div> <div>Standard carton package<ul style="list-style-type: none">Quantity: 5pcs / 1 cartonDimensions 59.0 x 55.0 x 44.5cm (L*W*H)Weight 13.7kg (G.W)</div> <div>Ordering Information<ul style="list-style-type: none">AirLive ANVR32-2S AI 32-CH AI Network Video Recorder with HDMI</div>	

* Specification will be changed without prior notice

* All trademarks, logos and brand names are the property of their respective owners.

AirLive